

SPRAGUE DEVICES, INC.

SW2K-WINDSHIELD WIPER MOTOR

Electric Motor With Optimum Efficiency And Reliability.



The SW2K Electric Wiper Motor delivers a minimum of 36 Nm of torque and offers optimum efficiency and reliability. It has a longer service life than traditional electric motors, yet requires no maintenance.

Like all other wiper motors from Sprague Devices, every

SW2K is 100% tested for electrical current, speed, and park position.

For ultimate performance and reliability, specify the SW2K Wiper Motor on your next wiper system application.

For complete product/service information call us toll-free at (800) 245-7691.

Performance Benefits

- Small frame size yet high torque.
- RFI suppression.
- Optimal mounting design.
- Water protected.
- Straight & tapered shaft styles available.

Design Features

- Standard 12 volt D.C. operation.
- Light weight; 3 lbs.
- Internal thermo switch protects against stall conditions.
- Dynamic park.
- Available with connector on wire harness.
- All leads and contact plates are located inside the motor.
- Aluminum gear housing.
- Motor housing, gear housing, gear cover and output shaft are all individually sealed.
- Steel worm and polymer drive gears.

Quality Assurance

- SW2K wiper systems exceed OEM durability requirements of 4.5 million cycles.
- Every motor is tested prior to shipment for speed, park position and current draw.
- Quality control processes insure all parts meet design specifications.

Performance Features

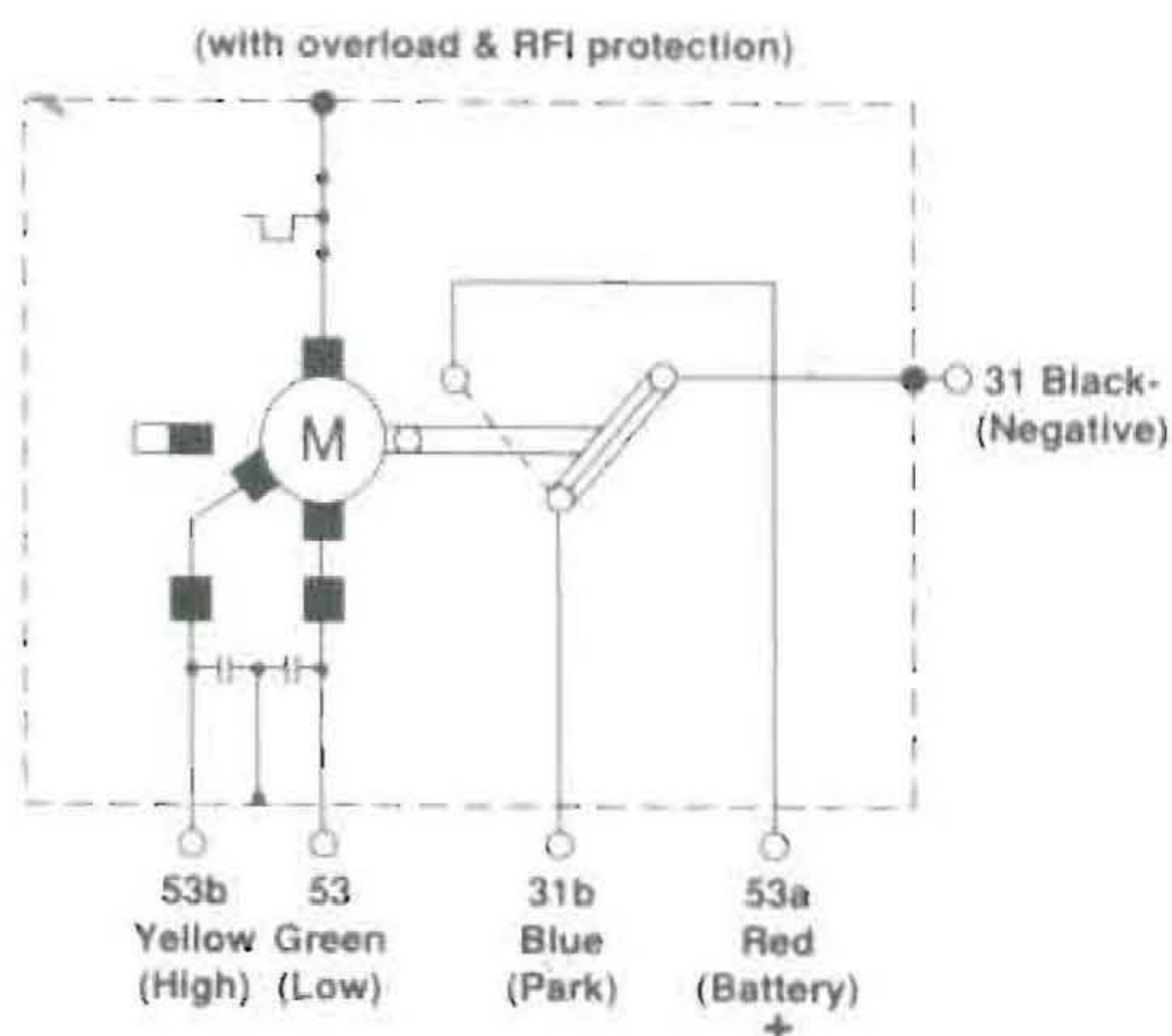
TORQUE	LOW SPEED	HIGH SPEED	WEIGHT
Nm >36	CPM 40±5	CPM 63±5	Kg 1.4

 **SPRAGUE**
Heavy Duty Technology Group

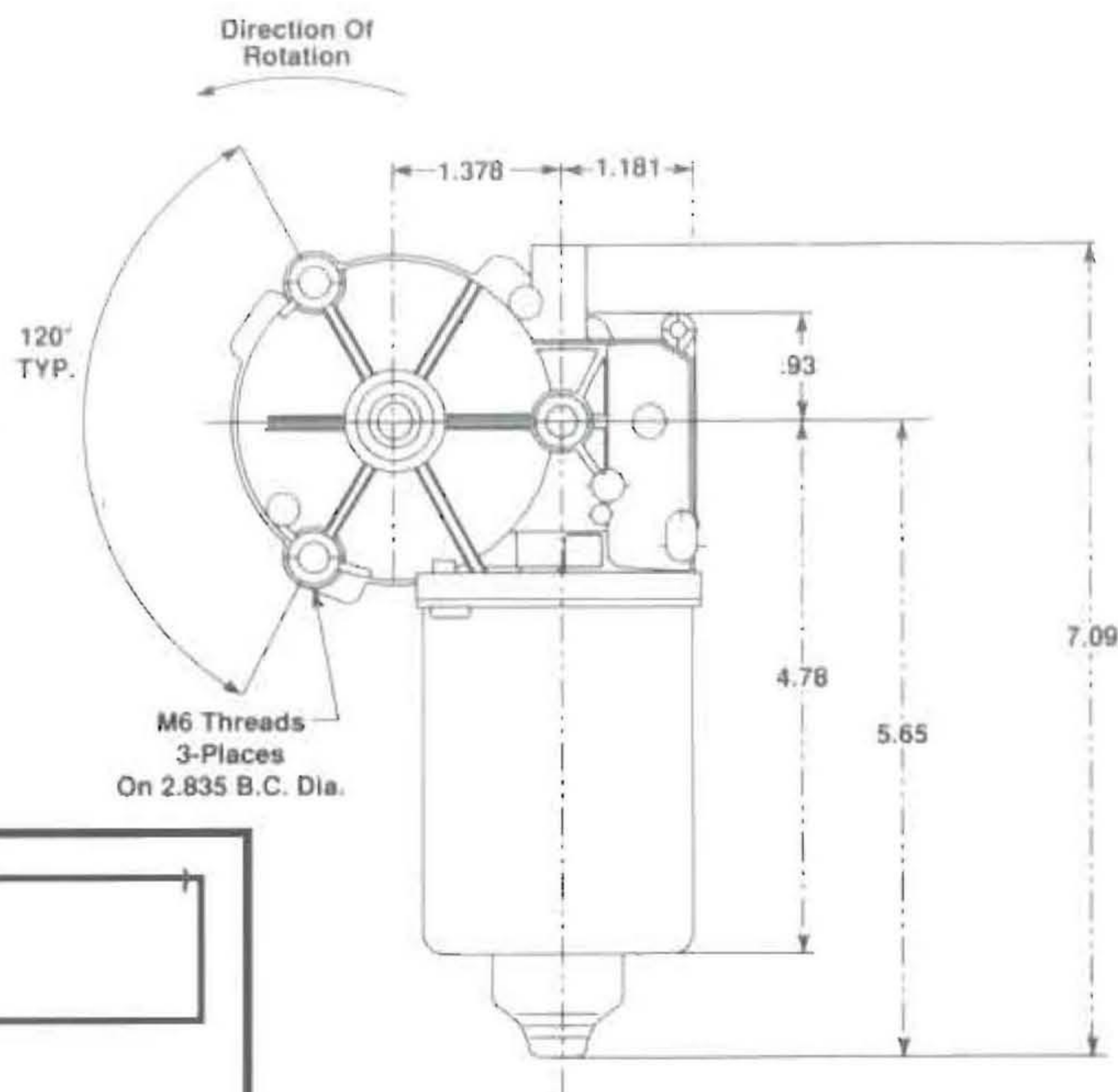
SPRAGUE DEVICES, INC.

SW2K-WINDSHIELD WIPER MOTOR SPECIFICATIONS

CIRCUIT DIAGRAM



DETAIL DRAWINGS



TORQUE TESTING

